

UNIQUE AND ICONOCLASTIC, THE DINH VAN WEDDING OFFER

SQUARE RING: THE CORNERSTONE OF DINH VAN'S STYLE.

In the mid-1960s, Jean Dinh Van began to create a highly recognizable geometric style that was his alone. With his famous *Deux Perles* ring (1968) and his *Bracelet Square* (1968), he rapidly developed a predilection for square designs that perfectly match the shape of the fingers and wrist. Heir to functionalism, Jean Dinh Van introduced the notion of comfortable jewelry for the very first time. Although, in essence, wedding bands and engagement rings are precious pieces worn for life, Jean Dinh Van sees them more particularly as everyday companions, "*jewelry that is taken out of the safe and worn in the streets*".

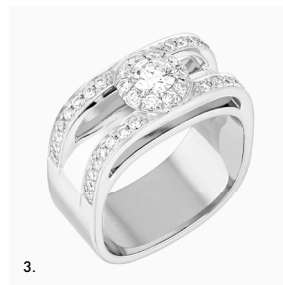
Thanks to this square shape, the **Flore** and **Capucine** engagement rings (named in homage to Paris) are identifiable at first glance and designed not to spin around the finger.



1.



2.



3.



4.

1. Flore paved engagement ring 0.60ct, white gold and diamonds (on estimate) • 2. Flore engagement ring 0.60ct, white gold and diamonds (on estimate) • 3. Capucine paved ring, white gold and diamonds (8 500€) • 4. Capucine ring, white gold and diamonds (7 250€)



From the **Le Cube Diamant** collection, the ring bearing two rows of diamonds brings together a duo of essential geometric shapes: the circle, a sign of spirituality, and the square, a symbol of stability. Surrounded by two diamond-set rows, the central diamond is beautifully highlighted and appears seemingly suspended in the air.

1. Le Cube Diamant large bracelet, white gold and diamonds (10 200€) • 2. Le Cube Diamant two paved rows ring, white gold and diamonds (4 900€) • 3. Le Cube Diamant two paved rows hoops, white gold and diamonds (5 800€)



WEDDING RINGS AND SQUARE SOLITAIRES IN PERFECT HARMONY.



These 3 square engagement rings may be perfectly mixed and matched with the brand's square wedding bands, available in different widths (2 or 4mm), materials (yellow or platinum) and settings, creating stunning sets.



4. Square wedding band 2mm, platinum (1 450€) • 5. Square wedding band 2mm, white gold and diamonds (1 950€) • 6. Square wedding band 4mm, platinum (2 200€) • 7. Square wedding band 4mm, white gold and diamonds (3 990€)



TUBULAR RING: THE QUINTESSENTIAL DINH VAN ALTERNATIVE.

The **Pulse** and **Seventies** collections provide future brides and grooms with a shared design, thanks to their unisex bands. Both collections feature tubular rings in a cylindrical shape, introduced by Jean Dinh Van in the mid-1970s, which has become a classic in modern jewelry style.

The rings in the **Pulse** collection are characterized by their chiseled features and open work shapes. Available in yellow, rose and white gold, they are distinguished by diamonds studded in rhythmic steps, reminiscent of notes on a musical score.



The **Seventies** collection stands out due to its taut lines with softened angles, directly inspired by a key ring.

1. Pulse medium paved ring, white gold and diamonds (5 100€) • 2. Pulse small paved ring, white gold and diamonds (2 940€) • 3. Seventies medium ring, white gold (2 290€) • 4. Seventies medium ring, white gold and diamonds (4 800€)



ABOUT DINH VAN

In 1965, guided by his instinct, Jean Dinh Van created a jewellery brand that nobody was expecting. An iconoclast by nature, he worked the metal with his hands like a sculptor following his creative impulse. Jean Dinh Van's vision was simple: jewellery that was steeped in design, an extension of the body, for everyone, to be worn everywhere, anywhere, anytime. Jewellery that broke away from the norms of the Place Vendôme by sublimating everyday objects.