

A 3D maze constructed from blue, rectangular blocks, viewed from an elevated perspective. The maze is complex and winding, with the text 'LILA FARGET' overlaid in the center.

LILA FARGET

Press Kit



Born in 1972, Lila Farget is a French sculptor who lives and works in Brussels, Belgium. She obtained her master's degree in sculpture from ENSAV La Cambre, Brussels, in 1996. Lila studied the technique of molded glass during various internships at the MusVerre workshop (Sars-Poteries, France). When she graduated, glass became naturally a matter of course. Sculpture is a material in action, molded glass is Lila's language, giving physical reality to her thoughts in order to recreate an emotion. Glass allows a triple reading of the work: the exterior form, the interior space and an intimate dialogue with light.

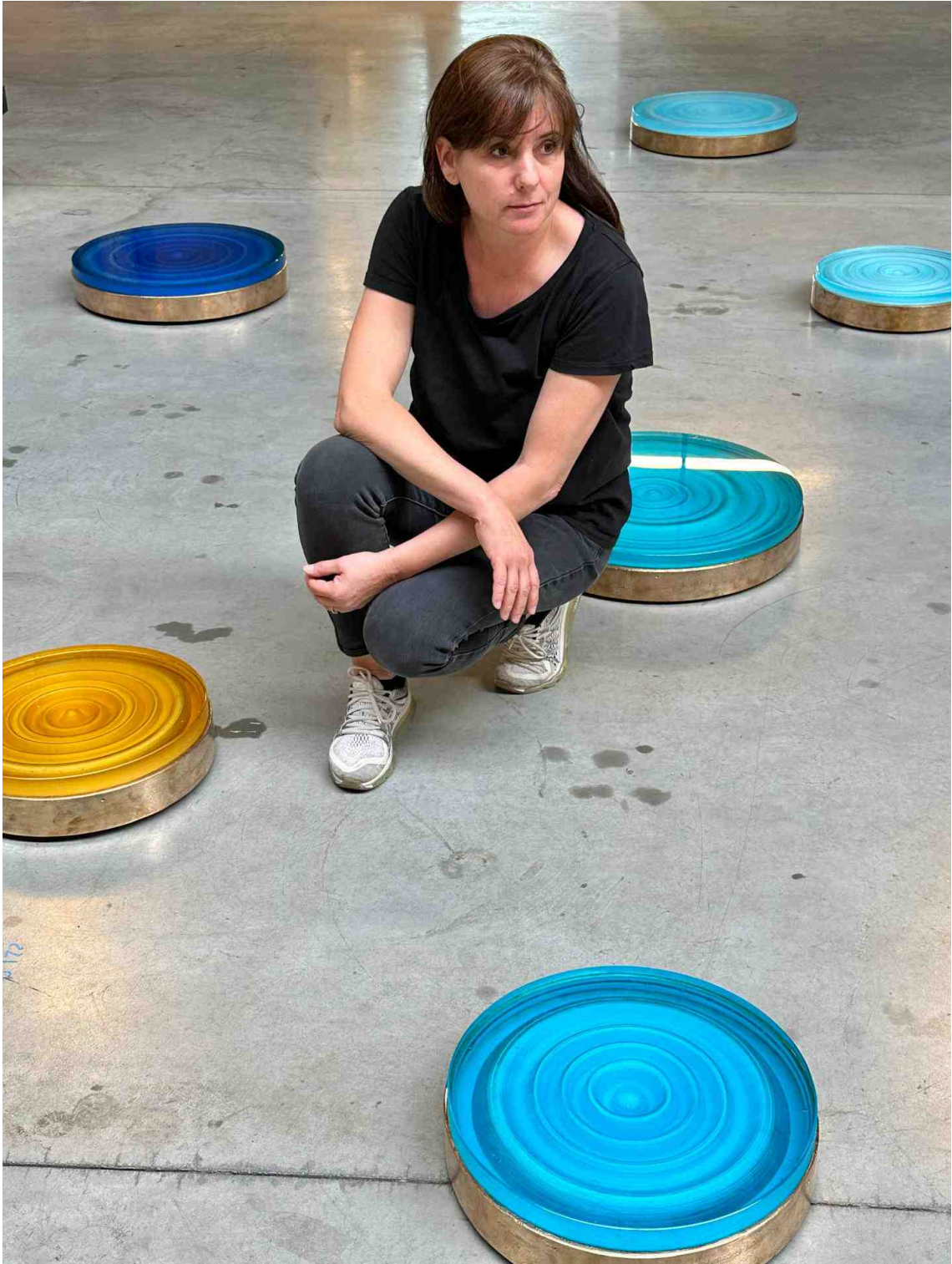
Part of her work is based on a series of architectural forms and houses, her glass sculptures express an idea, a symbol, an utopia... The idea of construction is central to her work: she often creates her sculptures like a vertical edifice, with a succession of layers assembled and superimposed to create a volume, a form, often colored, which she sometimes multiplies and plays with to propose a physical experience in space. These layers, which can be compared to rock strata in geology, evoke the successive stages that build life. In a way, she is working on memory, on the mental activity that enables us to remember past experiences to better apprehend the future.

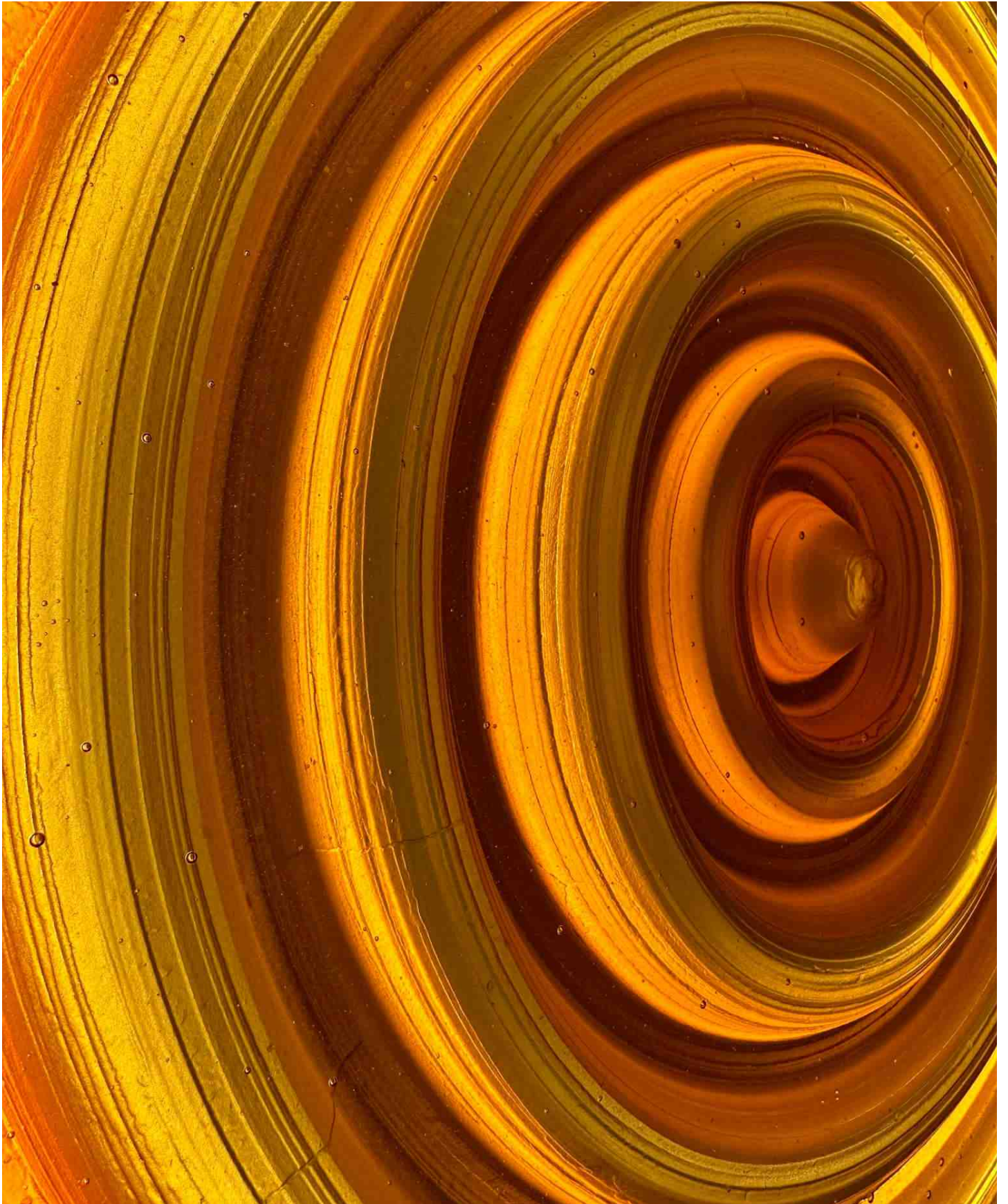
She finds volumes in architecture that inspire her. This allows her to evoke openings and doors, to create a link between the outside and the inside, and to relate the material to form and space.

Lila also collects the cardboard packaging found in our consumer products, that end their short existence as waste, in which Lila perceives geometric beauty and sculptural potential. She reinvents them in glass, a poetic way of highlighting materials destined to be destroyed.

Immersed in a professional environment of designers at Zaventem Ateliers, Lila wanted to develop a new approach to glass by creating a luminous bas-relief combined with bronze casting, a technique very close to glass casting. These wall sculptures were born out of a study of the undulation of a drop of water. The result is rings of controlled imperfection that are peacefully repeated endlessly, giving the glass a gentle sensation of movement...

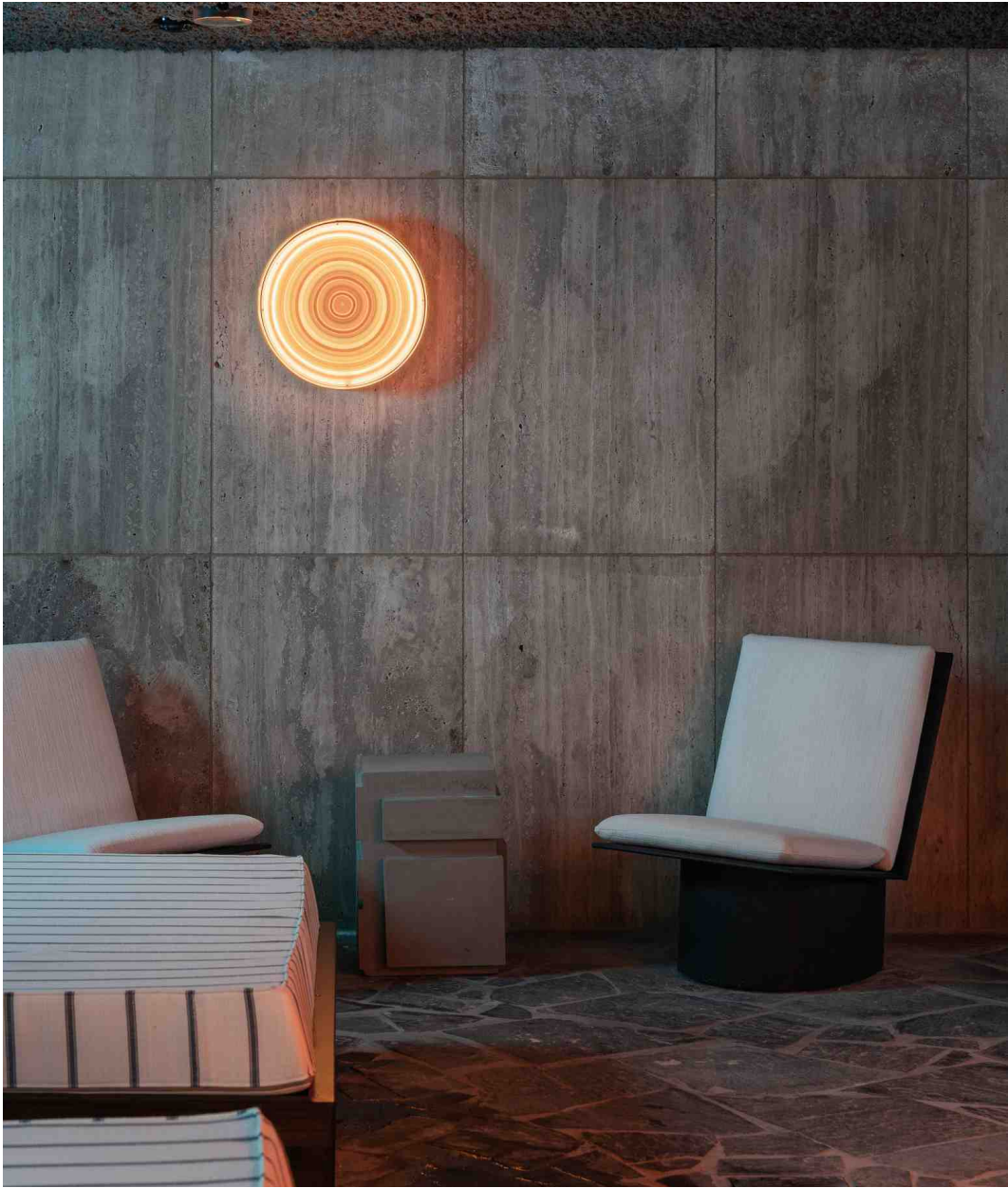
For her exhibition at the Charleroi Glass Museum, Lila Farget reinvents the theme of the labyrinth, creating a glass maze in which the eye is invited to get lost, right down to the transparency of the walls, with all that it represents, both reassuring and frightening. The artist has discovered a new formal language, in which the serial aspect of the form definitively eradicates our reference points.

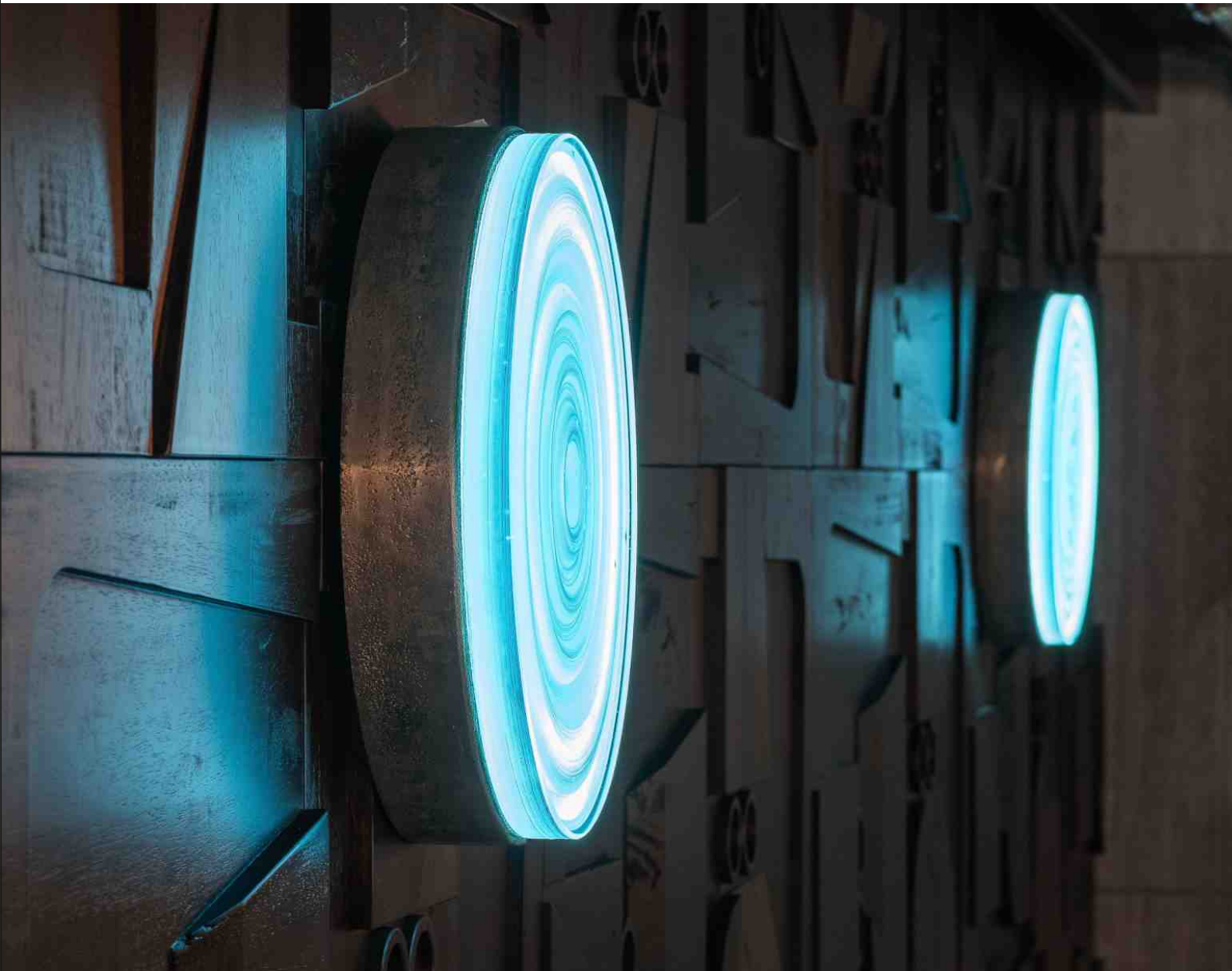






Left: ONDULATION #8 (detail), 2023, Molded Glass & Cast Bronze, Orange, diam 40 cm, @ Mix Brussels
Right: ONDULATION #16, 2023, Molded Glass & Cast Bronze, Yellow, diam 40 cm, @ Zaventem Ateliers,
can be seen @ Tiffany & Co (Tokyo, Omotesando)



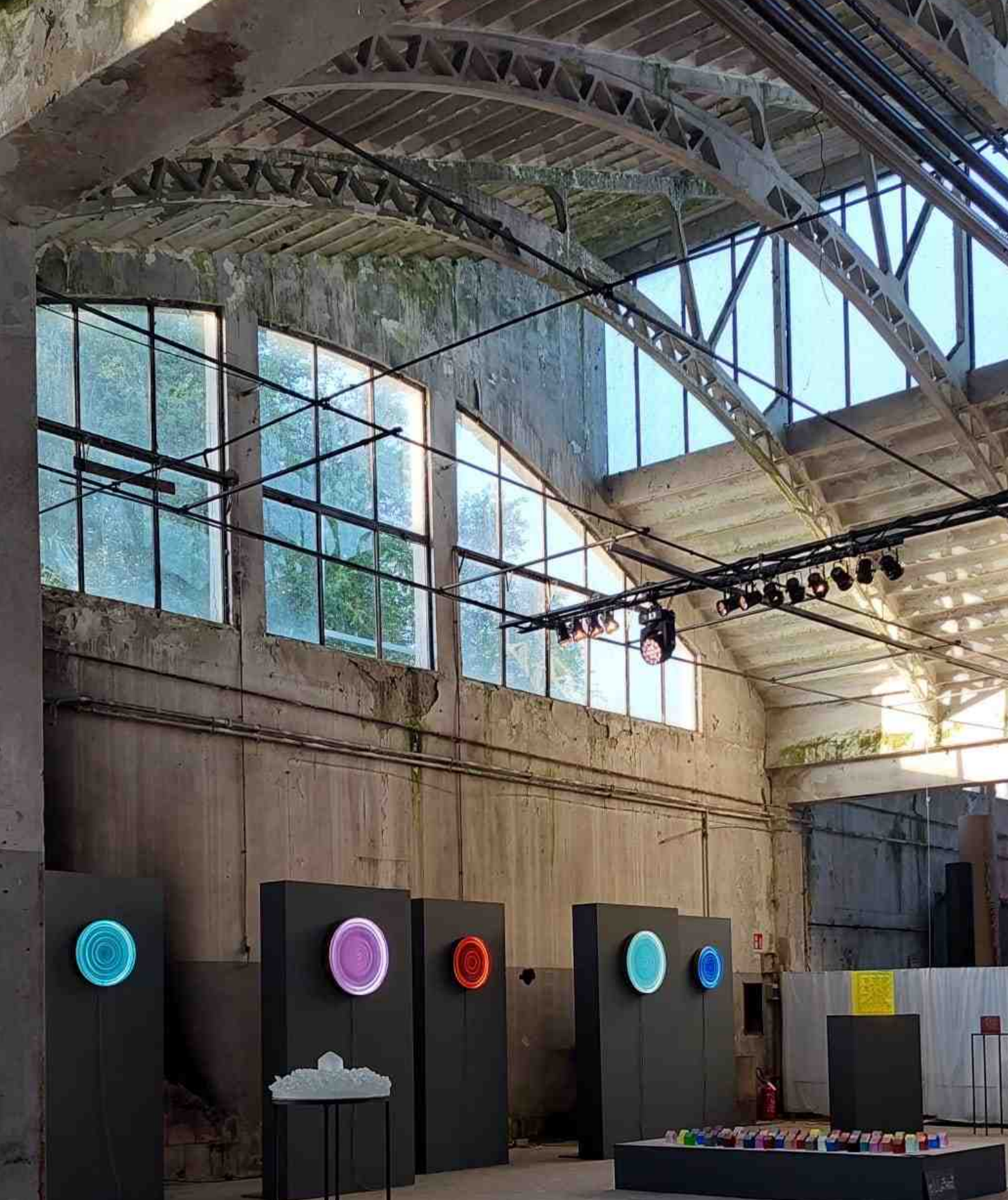


Left: ONDULATION #13, 2023, Molded Glass & Cast Bronze, Orange, diam 40 cm @ Mix Brussels
Right: ONDULATION #9 & #10 , 2023, Molded Glass & Cast Bronze, Aqua Green, diam 40 cm
@ Mix Brussels
Photography L/R: Jelle Van Seghbroeck





Left: ONDULATION #17 (detail), 2023, Molded Glass & Cast Bronze, Ice Blue, diam 55 cm
Photography: Jelle Van Seghbroeck
Right: Set of 5 ONDULATIONS, diam 40 & 55 cm @ Tiffany & Co (Bologna, Italy)
Photography: Courtesy of Tiffany & Co



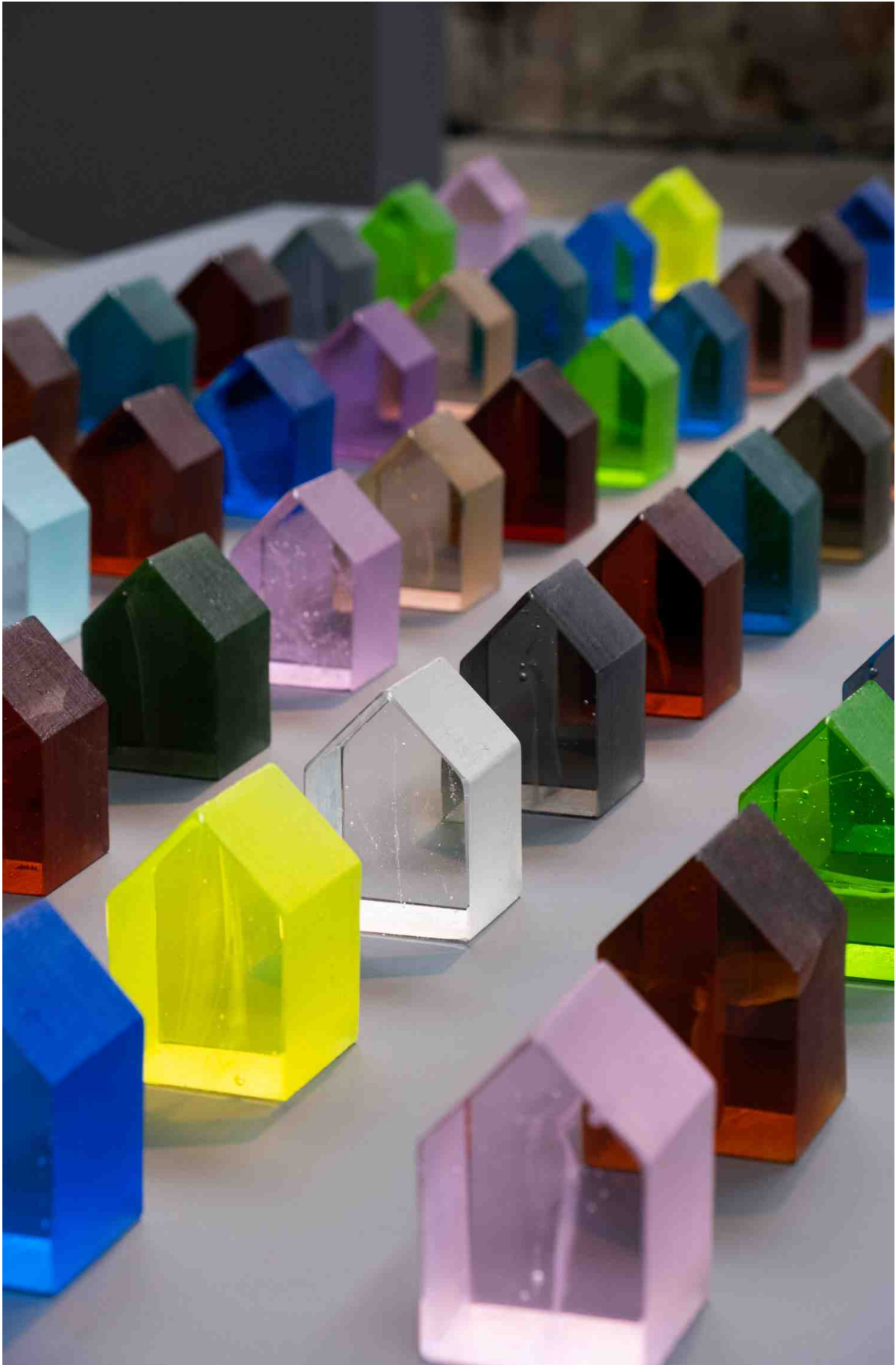


Left: Exhibition @ Baranzate, Milano, 2022

Right: In front of Lila Farget's Studio @ Zaventem Ateliers



Left: BEACH HOUSES, 2006, Molded Crystal & Cement, 36 x 12 x 12 cm, coll. Spazio Nobile Gallery
Photography: Gilles Cruypenynck
Right: Installation of 60 LITTLE HOUSES, 2022, Molded Glass, 6 x 6 x 9 cm each
Exhibition @ Baranzate, Milano, 2022
Photography: Amber Vanbossel





Left: RECYCLED FORM #5, 2006, Molded Glass, Yellow Green Effect, 43 x 43 x 13 cm

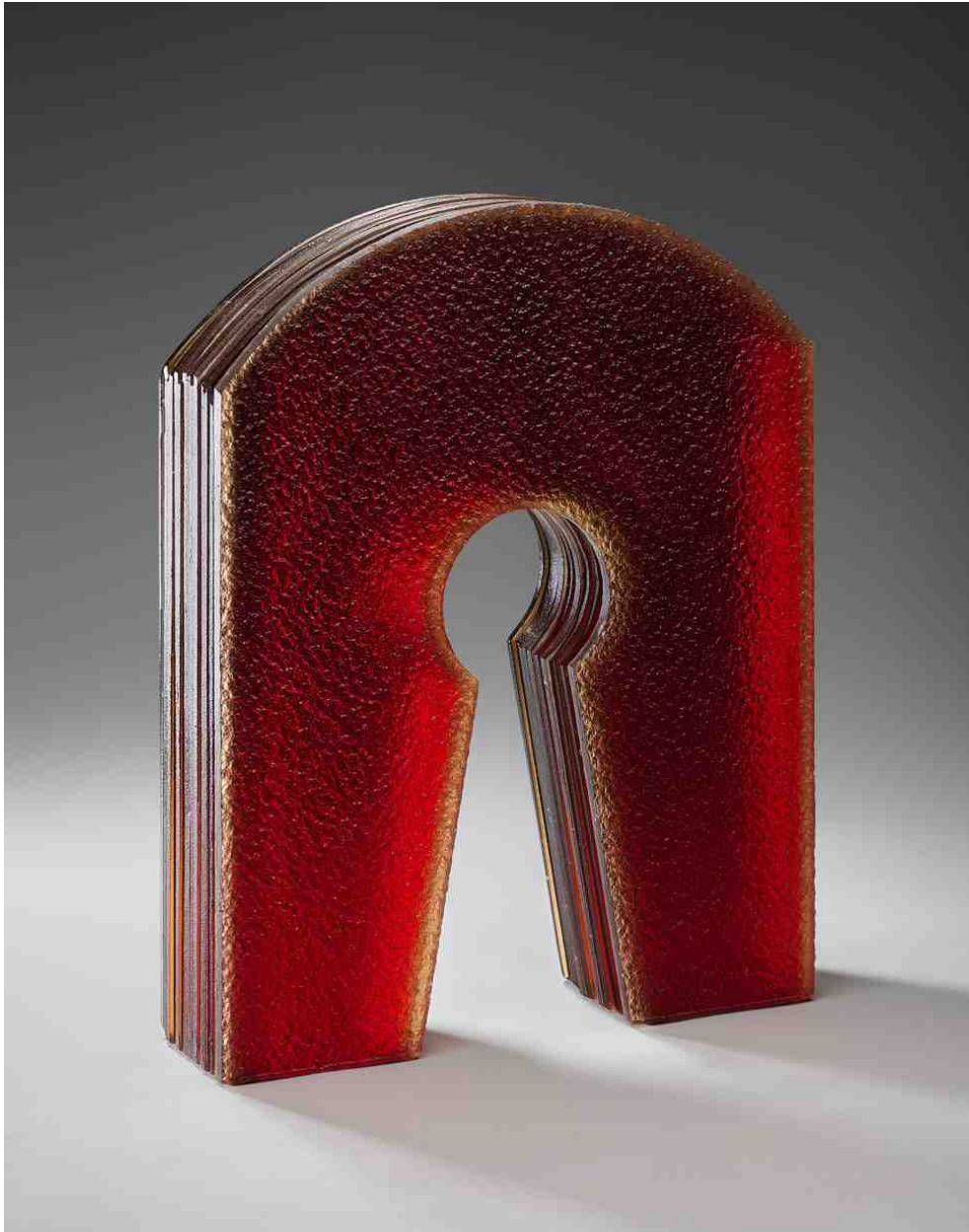
Photography: Gilles Cruypenynck

Right: RECYCLED FORM #7, 2022, Molded Glass, Blue Green Effect, 41 x 20,5 x 16,5 cm

Exhibition @ Zaventem Ateliers expands in Paris, 2022

Photography: Amber Vanbossel





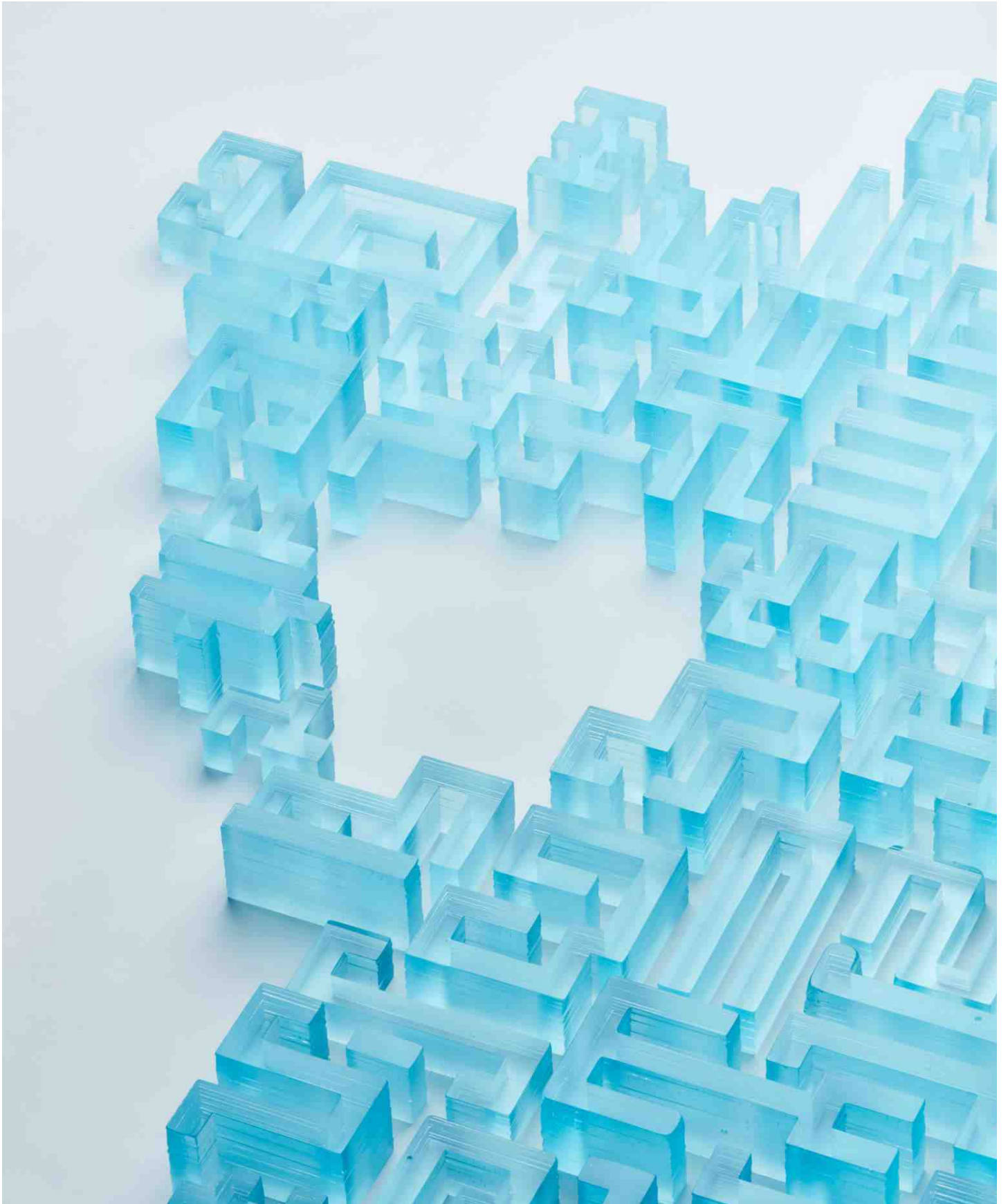
Left: ARCHITECTURAL FORM #3, 2008, Molded Glass, Deep Red, 43 x 32 x 9 cm

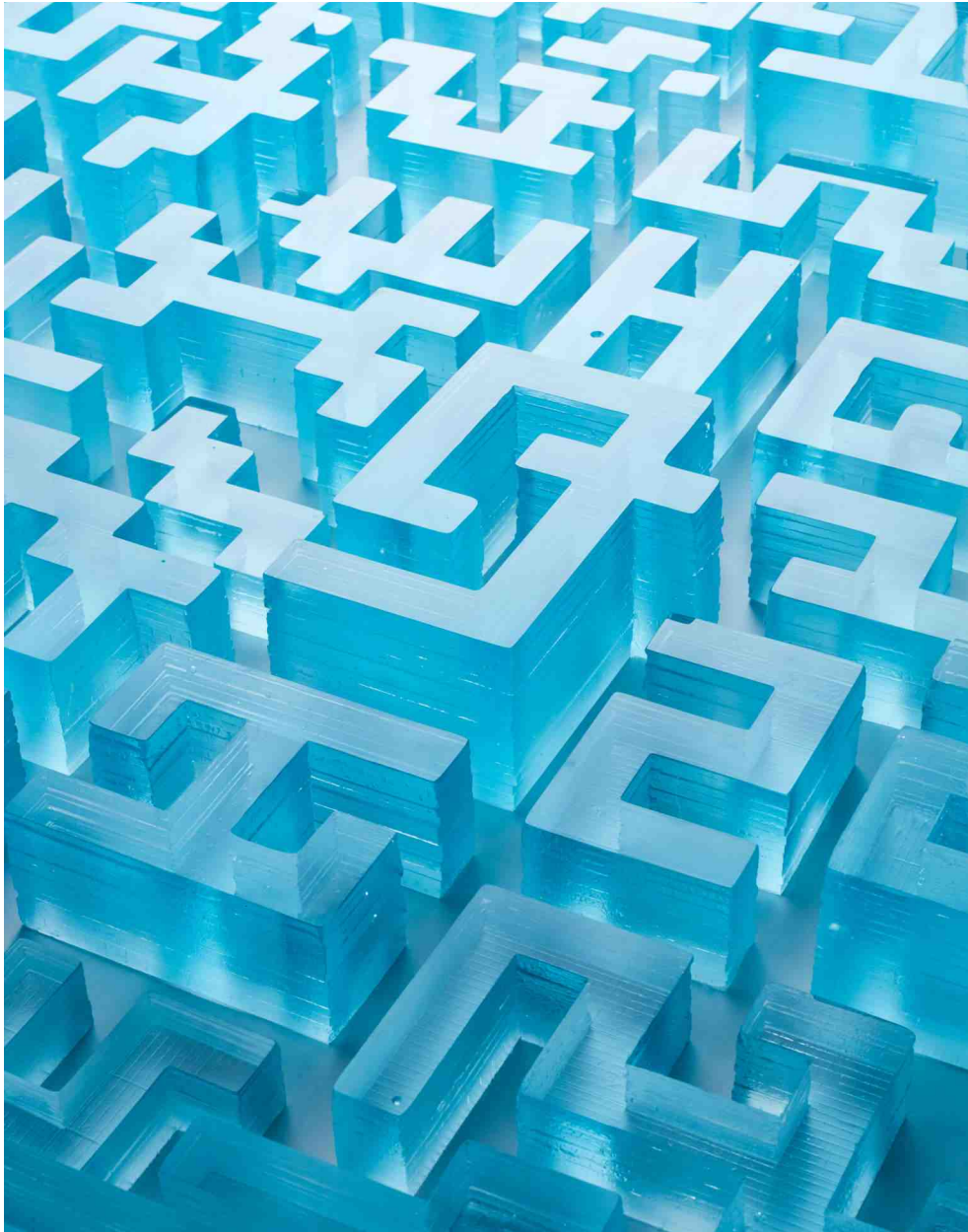
Photography: Gilles Cruypenynck

Right: Group exhibition THREADS OF NATURE, @ Spazio Nobile Gallery, Brussels, 2021

Photography: Margaux Nieto, courtesy of Spazio Nobile Gallery







Left & right: BLUE MAZE (details), 2024, Installation of 84 units created for a solo exhibition
@ Charleroi Glass Museum, Molded Glass, Ice Blue, 315 x 100 x 9 cm
Photography: Stan Huaux



BLUE MAZE (detail), 2024, Molded Glass, Ice Blue, 21 x 18 x 9 cm
Photography: Gilles Cruypenynck

PAST, PRESENT & NEXT EXHIBITIONS

2024 UNDER CONSTRUCTION, Musée du Verre de Charleroi

2024 Collectible, Brussels

2023 Brussels Design Spetember, Mercerie, Brussels

2022 Milan Design Week @ Baranzate Ateliers

2022 Mint Gallery, London

2022 Collectible, Brussels with Spazio Nobile Gallery

2022 Zaventem Ateliers expands in Paris

2022 Designers for Ukraine, @ Zaventem Ateliers

2022 Spazio Nobile at Home, Tervuren

2021 Sapzio Nobile Gallery, Brussels, THREADS OF NATURE

2021 Milan Design Week

...

2007 Winner of the competition Ateliers d'Art de France

ALL MY WORKS ARE UNIQUE PIECES

CONTACT:

LILA FARGET

ZAVENTEM ATELIERS - Studio 34

Fabrieksstraat 15/19

B-1930 Zaventem - BELGIUM

+32 (0) 491 64 33 49

lilafarget@gmail.com

<https://www.lilafarget.com>

<https://www.instagram.com/lilafarget/>



Portrait by Stan Huaux, 2023

LF